

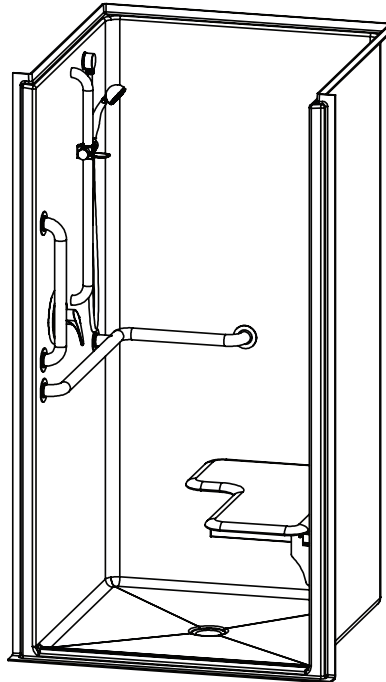
1363BFSD – ACCESSIBLE SHOWERS

inches

Interior: 36 x 36 x 75 ¼

Exterior: 42 ½ x 38 ¼ x 76 7/8

The 1363BFSD transfer shower features innovative installation design, including an engineered leveled base and improved front threshold. A true time and money saver, our pre-leveled base lets you install directly on a **level** floor. And its front threshold is engineered to keep a constant level without the use of brackets during installation.



AQUATIC ADVANTAGE

- National distribution
- 6 manufacturing facilities
- Private fleet
- Centralized customer service
- Field support

COLOR & TRIM OPTIONS

Stock	Upgraded
White	Almond Biscuit Bone

**Additional custom colors available.
(Contact Customer Service)

FEATURES

- Pre-leveled base
- AcrylX™ applied acrylic surface
- ¾" skirt
- ½" beveled threshold
- Barrier free when properly installed
- Smooth wall
- Slip-resistant, textured bottom
- Center drain
- Lifetime limited warranty (30 year commercial)

OPTIONS

- RH or LH fixture wall
- Grab bars
- Fold-up seat
- Hand-held shower assembly with slide bar
- Pressure balancing mixing valve
- Soap dish
- Curtain rod and/ or shower curtain

CODE COMPLIANCE

- ADA
- FHA
- ICC/ANSI A117.1
- HUD UM73a
- IAPMO Z124-2011
- CAN/CSA-B651-04
- CSA-B45-11

**Code compliant when fully equipped and installed according to guidelines.



Aquatic products may be specified as Lasco Bathware.



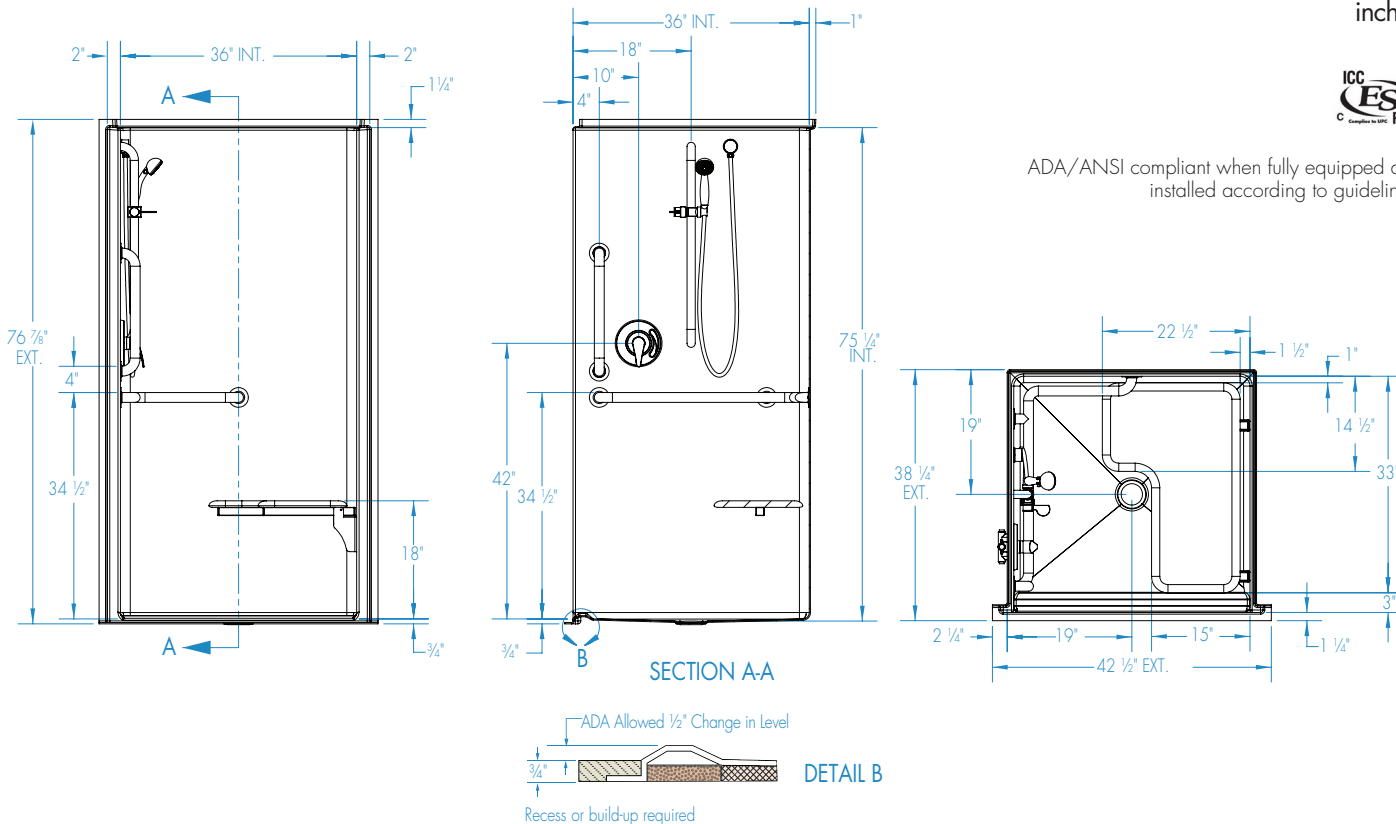
Aquatic products may be specified as Lasco Bathware.

1363BFSD

Interior: 36 x 36 x 75 ¼
 Exterior: 42 ½ x 38 ¼ x 76 ⅞
 inches



ADA/ANSI compliant when fully equipped and installed according to guidelines.



FEATURES

Dimensional Tolerance ± ⅜". Dimensions needed for site preparation should be measured from the unit. Aquatic assumes no responsibility for preparatory work.

Type and Model #	Material	Wall Finish	Pieces	Drain	Dam/Skirt Height	Net Wt. lbs	Pkg. Wt. lbs
Shower #1363BFSD	AcrylX™	Smooth	1	Center	¾" skirt, ½" interior threshold	140	150

DIMENSIONS

Specifications	inches
Width: Ext. / Int.	42 ½ / 36
Depth: Ext. / Int.	38 ¼ / 36
Height: Ext. / Int.	76 ⅞ / 75 ¼
Enclosure Opening:	36
Skirt Height:	¾
Drain Rough-In (from Back Wall)	19
Drain Rough-In (from Side Wall)	19

FRAMING DIMENSIONS inches

Type	D Depth	W Width	H Height	A	B	C
Alcove	35 ¾	38 ⅛	-	Box Out	19	19

