

S7424801 - Thermostatic Roman Tub Filler With Shower

Description

- Thermostatic Roman Tub Filler with Shower
- Two way diverter with stop
- Brass tub spout
- Single setting handshower with pause function
- 59" Metal shower hose
- Adjustable height shower with rain shower head
- 1.8 GPM @ 60 PSI handshower and showerhead
- 12 GPM @ 60 PSI Tub filler

Standards

- Complies with IAPMO UPC/cUPC
- ASME A112.18.1
- Complies with B125.1
- ADA Accessibility Guidelines for Buildings and Facilities - 4.27.4 Controls and Mechanisms
- ASSE 1016 Certified and listed



• S7424801

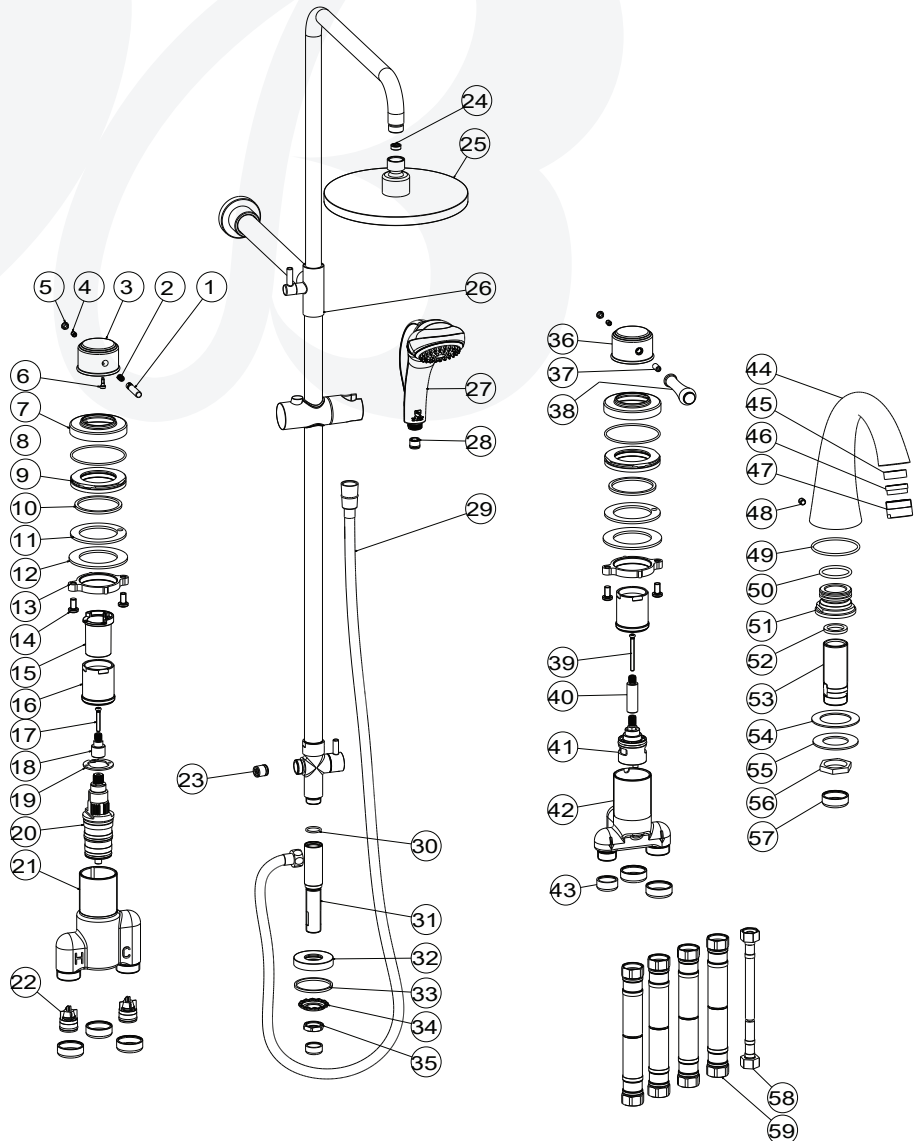


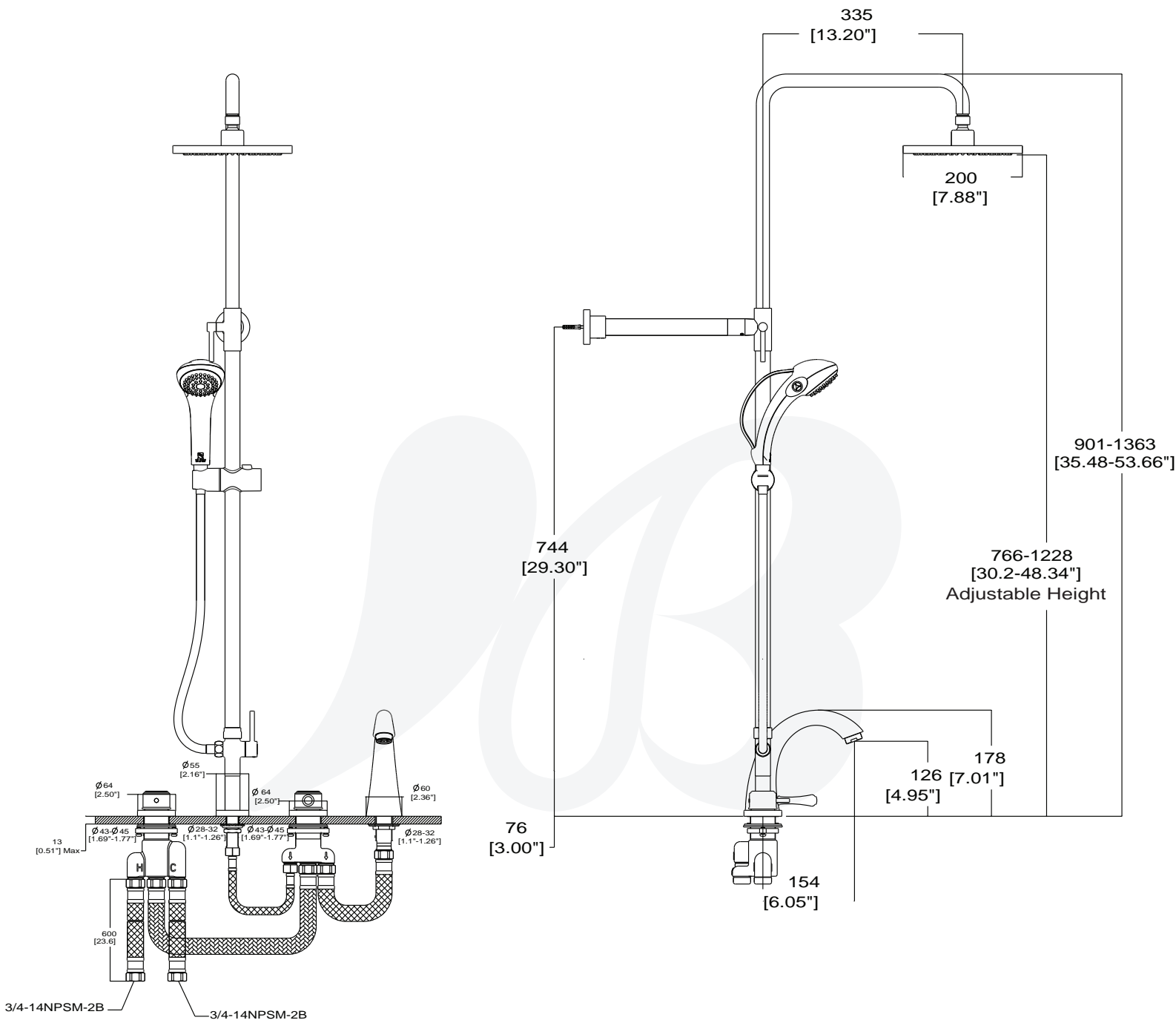
Colors / Finishes

S7424801 - Chrome

BREAK DOWN

NO.	Drawing No.	Part Desc	Qty
1	CTHB0373	PUSH-BUTTON	1
2	CTBT0099	SPRING	1
3	CTDB0614	HANDLE BODY	1
4	CTST0117	SCREW	2
5	CTCP0072	CAP	2
6	CTBB0035	PIN	1
7	CTCB0938	COVER	2
8	CTRR0247	O-RING	2
9	CTNB0416	NUT	2
10	CTWR0384	WASHER	2
11	CTWR0350	WASHER	2
12	CTWT0107	PLATE	2
13	CTNB0415	NUT	2
14	CTST0308	SCREW	4
15	CTCP0561	STOP-RING	1
16	CTCB0937	LOCK SLEEVE	2
17	CTST0050	SCREW	1
18	CTMB0879	ADAPTER	1
19	CTKT0073	LOCATING RING	1
20	ATBA0370	CARTRIDGE	1
21	CTYB0765	BODY	1
22	ATBA0373	CHECKSTOP	2
23	ATBA4027	RESTRICTOR	1
24	ATBA0203	CHECKSTOP	1
25	ATBE0303	SHOWER	1
26	ATBP8019	SHOWER TUBE SET	1
27	ATBE0201	SHOWER	1
28	ATBA0212	CHECKSTOP	1
29	ATBP0056	HOSE	1
30	CTRR0045	O-RING	1
31	CTPB0651	CONNECTOR	1
32	CTCB0638	FLANGE	1
33	CTWR0114	WASHER	1
34	CTWT0093	PLATE	1
35	CTNB0348	NUT	1
36	CTDB0615	HANDLE BODY	1
37	CTST0136	SCREW	1
38	CTHB0187	HANDLE	1
39	CTST0309	SCREW	1
40	CTMB0880	ADAPTER	1
41	ATBA0239	DIVERTER	1
42	CTYB0766	BODY	1
43	CTQP0023	COVER	2
44	CTFB0275	SPOUT	1
45	CTWR0018	WASHER	1
46	CTQP0030	AERATOR	1
47	CTXB0021	AERATOR COVER	1
48	CTST0153	SCREW	1
49	CTRR0108	O-RING	1
50	CTRR0137	O-RING	1
51	CTDB0131	BASE	1
52	CTWR0146	WASHER	1
53	CTPB0649	SHANK	1
54	CTWR0115	WASHER	1
55	CTWT0038	PLATE	1
56	CTNB0156	NUT	1
57	CTQP0073	COVER	6
58	ATBP0313	HOSE	1
59	ATBP0516	HOSE	4





Inches marked in parentheses []

Item Number	Type	Date
S7424801	Thermostatic Roman Tub Filler	12/29/2017